

Reason Standard Nucleus² Profile

Setup and Quick Start Guide



Introduction

The first part of this tutorial details how to setup Reason with your SSL Nucleus². The second part details the commands assigned to the profile.

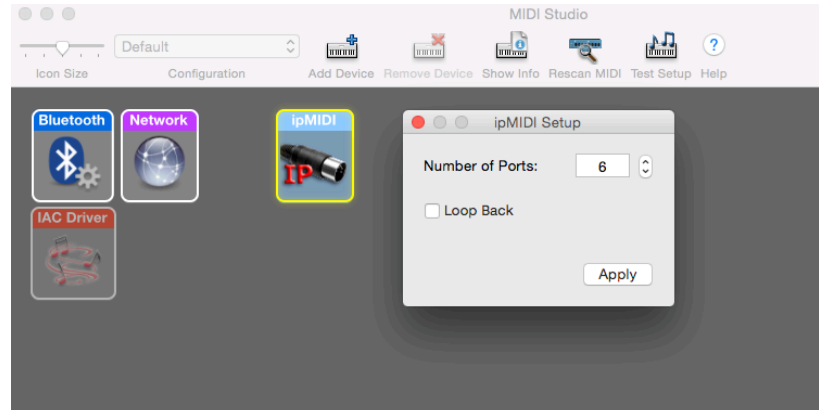
This tutorial assumes you have already installed all the necessary Nucleus² related software on your computer and that there is both a working network and USB connection from your DAW computer to the Nucleus. If you have yet to configure this part of your system, please refer to the Nucleus² Owner's Manual before continuing.

Go to the SSL website › [Nucleus² Product page](#) › [Downloads](#) to make sure your software is all up-to-date.

ipMIDI Setup

Apple MacOSX

- 1) Close all applications using MIDI
- 2) Open AudioMidi Setup (Applications > Utilities > Audio MIDI Setup)
- 3) Open the MIDI Window (Audio MIDI Setup > Window > Show MIDI Studio)
- 4) Double click the ipMIDI icon
- 5) Set number of ports to 6 and ensure that 'Loopback' is not ticked and then press 'Apply'



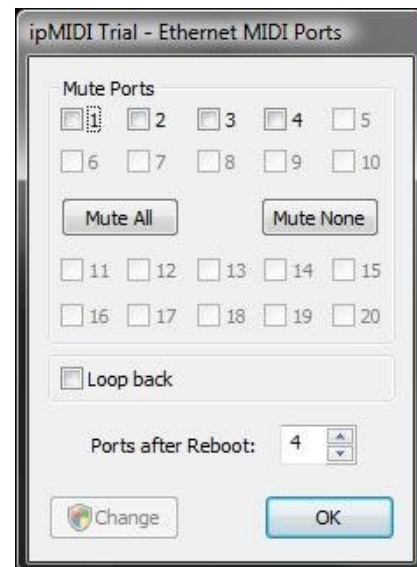
OR

Microsoft Windows OS

This setup information covers Windows 7, 8, and 10

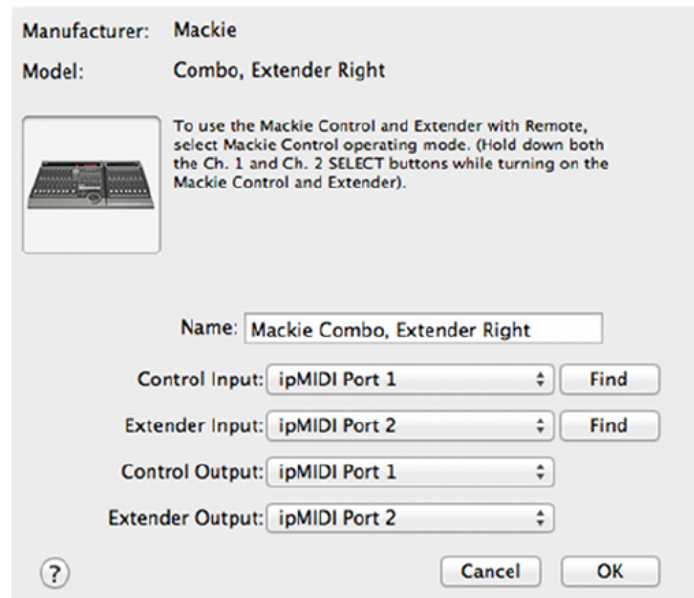
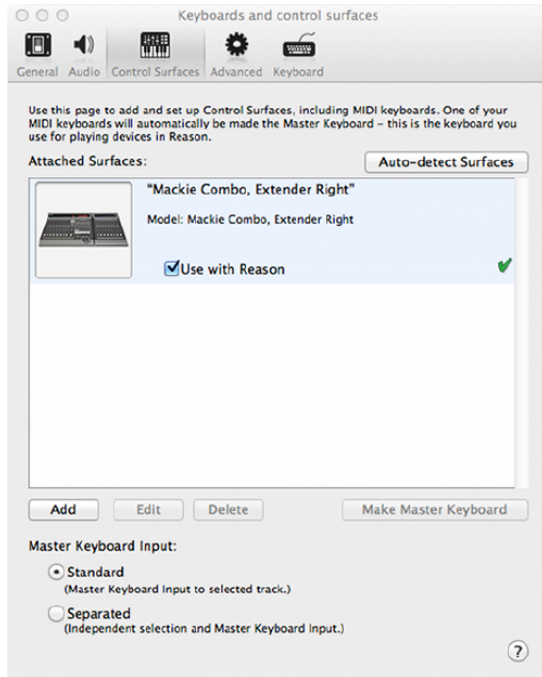
- 1) Launch the ipMIDI Monitor application
- 2) Ensure Ports 1 to 6 are not muted
- 3) Un-tick 'Loop Back'
- 4) Set 'Ports after Reboot' to 6 and ensure that 'Loopback' is not ticked and then press 'OK'

Note: If you are opening up Ports for the first time, after Rebooting your computer, these will be 'muted'. Be sure to open ipMIDI back up and untick the muted Ports



Setting up Reason

In the Reason Preferences menu, select the Keyboard and Control Surfaces page and use the Add command to select a 'Mackie Combo, Extended Right' option. Click on 'EDIT' to define ipMIDI ports. Enter ipMIDI ports according to the Nucleus² layer that will be controlling Reason. In this example, Nucleus² will have control of Reason on layer 1.



Click on OK to finish the setup.

User 1 – Main Soft-Key page



The image above shows the 16 commands set for the Nucleus² Reason Profile.

NM/VAL	Flips the lower row of V-pot displays to show names of Reason parameters controlled by faders (instead of Reason Device assigned to the faders). The UP/DOWN cursor keys select next/previous track in the Reason Sequencer, which automatically assign the track's instrument/device to the faders and V-Pots. The V-Pot parameter is only displayed when moved. The FLIP command interchanges the fader and V-Pot parameters, and displays the names if NM/VAL has been selected.
AReset	Activates 'Reset Automation Override' function.
Pan	Assigns V-Pots to Pan controls
Aux1	Assigns V-Pots to Aux 1 level controls
Aux2	Assigns V-Pots to Aux 2 level controls
Treble	Assigns V-Pots to Treble controls
Bass	Assigns V-Pots to Bass controls
FXRet	Assigns V-Pots to FX Return controls
SOLO	Acts as solo ON/OFF for selected track
MUTE	Acts as mute ON/OFF for selected track
Edit	Switches the sequencer to EDIT mode on selected track
NoFlip	Cancels flip status (pressing the flip button a second time will not cancel it) and is illuminated when flip is not active.
SOLO-X	Cancels all active track solo's
MUTE-X	Cancels all active track mutes
Tools	Displays Tool Window
Redo	Reverse Undo function – illuminated whenever there is a valid REDO operation.

Using the Reason Mixer

Since Reason 6, the mixer is more comprehensive than the standard 14:2 previously used.

To control the Reason mixer with Nucleus², right-click on the master section in the rack view and select 'create track for master section'. With this new track selected in the sequencer, the Nucleus⁶ faders now control the Reason mixers faders, and you can bank left and right to access all available tracks.

The V-Pots:

When 'Instrument' is selected on the left scribble strip of Nucleus², the V-Pots 1-8 control FX Returns 1-8 levels, and V-Pots 9-16 control FX Returns 1-8 Pans.

When the 'Plugin' button is selected on the left scribble strip, V-Pots 1-5 control the Master compressor, V-pots 9-12 control the master inserts, and V-Pots 14-16 control the Control Room section.

When the 'EQ' button is selected on the left scribble strip, the V-pots control the channel input gain, which if you hit a channel SEL key, the V-Pots 1-8 toggle to controlling the selected channels' dynamics section.

When the 'Pan' button is selected on the left scribble strip, the V-pots control the channel pan, which if you hit a channel SEL key, the V-Pots 1-8 toggle to controlling the selected channels' filters, rotaries, width and pan.

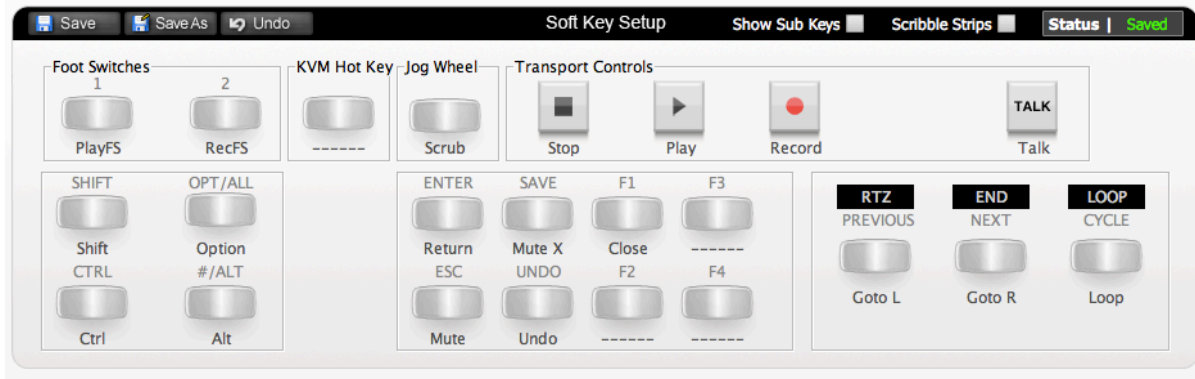
When the 'Send' button is selected on the left scribble strip, the V-pots control the FX1 level, which if you hit a channel SEL key, the V-Pots 1-16 toggle to controlling the selected channels' FX sends, rotaries, width and pan.

When the 'Track' button is selected on the left scribble strip, the V-pots control the FX2 level, which if you hit a channel SEL key, the V-Pots 8 toggle to controlling the selected channels' Filters and EQ.

Once you get used to this control methodology, it becomes very quick and easy to control the entire Reason mixer, toggling between seeing one parameter for every channel, to having total control pf an entire mixer section for a selected channel.

Once you have mastered controlling the mixer, it may be worth setting up 2 layers of Nucleus² to control Reason simultaneously, By using surface locking, DAW layer 1 can be set to your Reason Mixer, and DAW layer 2 can be used to control the rest of the rack, edit all devices etc.

Transport/Utility Keys



Below is a list of DAW commands supported by Reason:

DAW COMMAND	LABEL	REASON FUNCTION	NOTES
Keyboard ID	KeybID		Identifies Keyboard
Aux1	Aux1	Aux Send 1 on 14:2	
Pan	Pan	Pan on 14:2	
Treble	Treble	Treble EQ on 14:2	
Aux2	Aux2	Aux Send 2 on 14:2	
FX Rtn	FX Ret	FX Return 1:4 on 14:2	
Flip	Flip	FLIP	Flip parameter to fader
No Flip	No Flip	UNFLIP	Intercancels Flip
Bass	Bass	Bass EQ on 14:2	
SMPTE/Beats	SMPTE		
Busses	Busses	Accesses Busses	
Outputs	Outputs	Accesses Outputs	
User	User		
Shift	Shift		
Option	Option		
Control	Control		
Alt	Alt		
Reset Automation	AReset	Resets Automation	
Undo	Undo	Undo	
Mute Off	Mute-X	Turns Mute Off	
Solo Off	Solo-X	Tunrs Solo Off	
Redo	Redo	Redo	
Track Mute	Mute	Mute selected	
Track Solo	Solo	Solo selected	
Goto L	Goto L	Locates to L	
Goto R	Goto R	Locates to R	
Cycle	Cycle	Cycle	
Drop	Drop		
Replace	Rplace		
Loop	Loop	Loop	
Click	Click	Metronome	
Forward		Transport	

Rewind		Transport	
Stop	Stop	Transport	
Play	Play	Transport	
Record	Record	Transport	
Play Footswitch	PlayFS	Transport	External Footswitch
Record Footswitch	RecFS	Transport	External Footswitch
Scrub	Scrub		