

# Pro Tools Standard Nucleus<sup>2</sup> Profile

## Setup and Quick Start Guide



## Introduction

The first part of this tutorial details how to setup Pro Tools with your SSL Nucleus<sup>2</sup>. The second part details the commands assigned to the profile.

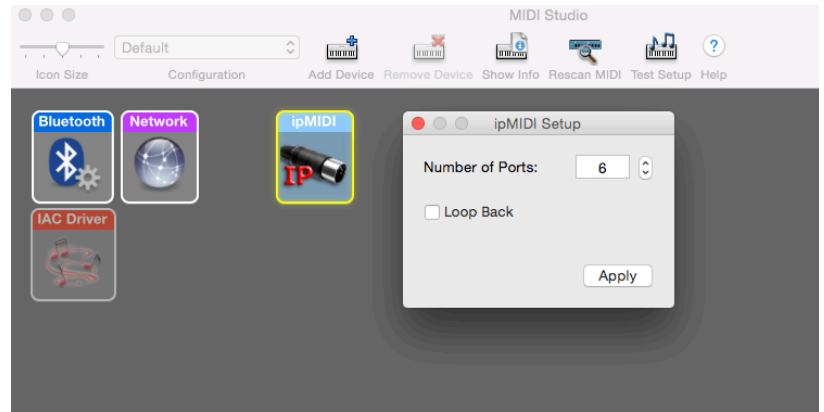
This tutorial assumes you have already installed all the necessary Nucleus<sup>2</sup> related software on your computer and that there is both a working network and USB connection from your DAW computer to the Nucleus. If you have yet to configure this part of your system, please refer to the Nucleus<sup>2</sup> Owner's Manual before continuing.

Go to the SSL website > SSL account > My Products > Downloads to make sure your software is all up-to-date.

# ipMIDI Setup

## Apple MacOSX

- 1) Close all applications using MIDI
- 2) Open AudioMidi Setup (Applications > Utilities > Audio MIDI Setup)
- 3) Open the MIDI Window (Audio MIDI Setup > Window > Show MIDI Studio)
- 4) Double click the ipMIDI icon
- 5) Set number of ports to 6 and ensure that 'Loopback' is not ticked and then press 'Apply'



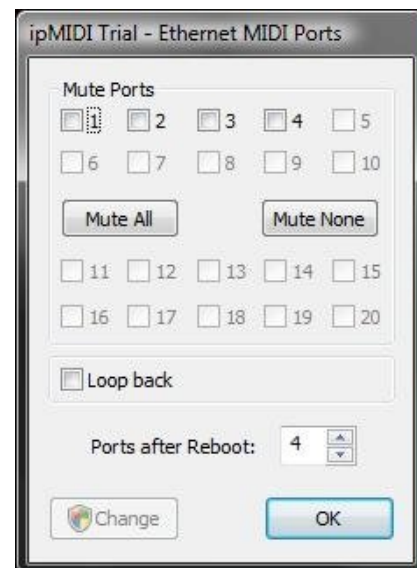
OR

## Microsoft Windows OS

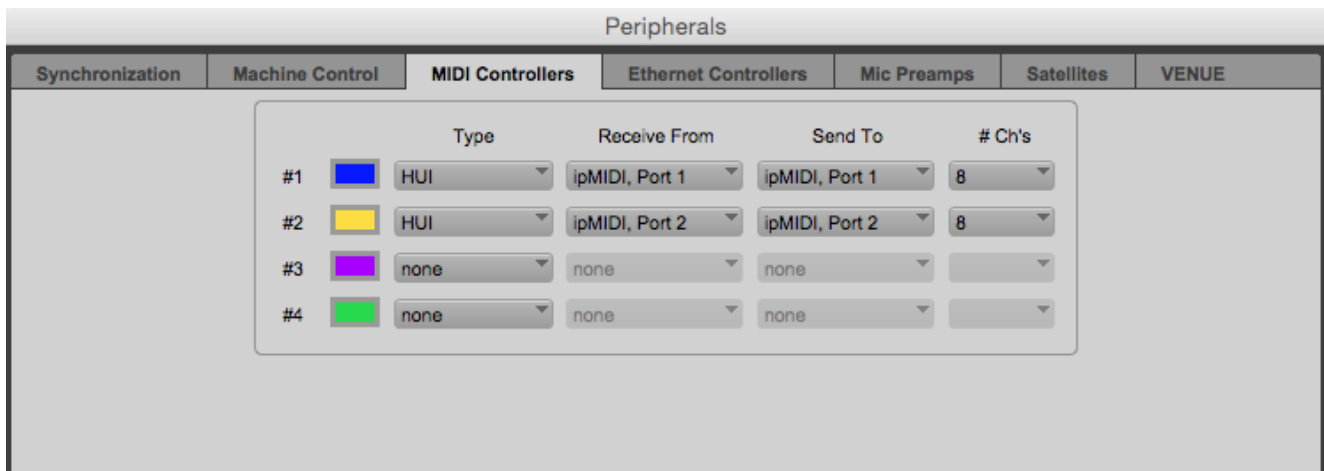
This setup information covers Windows 7, 8, and 10

- 1) Launch the ipMIDI Monitor application
- 2) Ensure Ports 1 to 6 are not muted
- 3) Un-tick 'Loop Back'
- 4) Set 'Ports after Reboot' to 6 and ensure that 'Loopback' is not ticked and then press 'OK'

**Note:** If you are opening up Ports for the first time, after Rebooting your computer, these will be 'muted'. Be sure to open ipMIDI back up and untick the muted Ports



## Setting up Pro Tools



### Device Setup

Control surfaces are configured in the Setup > Peripherals... > MIDI Controllers menu. In this example we will setup Pro Tools for operation on DAW layer 1 of Nucleus.

- 1) Setup the first HUI controller row to 'Receive From' and 'Send To' on ipMIDI Port 1, with '#Ch's' set to 8.
- 2) Setup the second HUI controller row to 'Receive From' and 'Send To' on ipMIDI Port 2, with '#Ch's' set to 8.

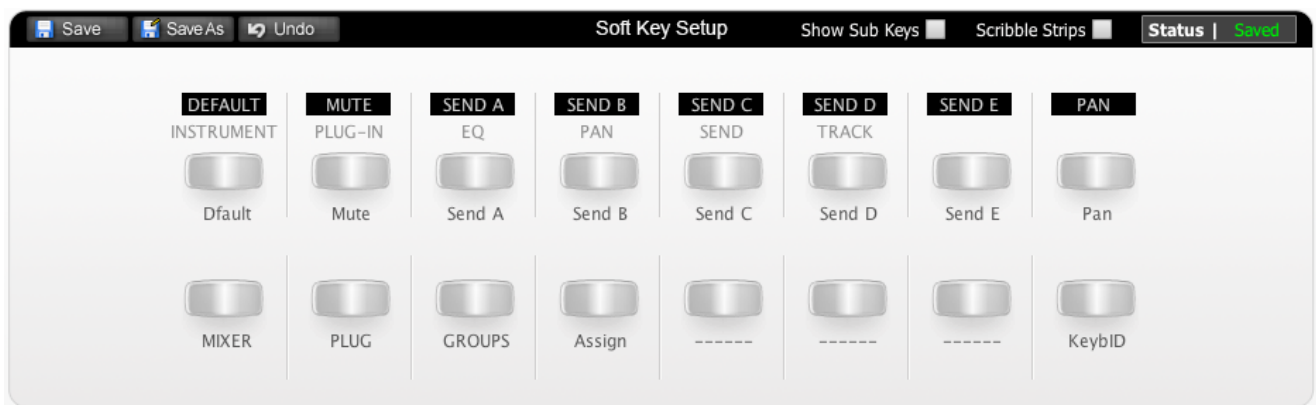
### A note on Numeric Keypad Setup

Make sure that in Pro Tools Preferences > Operation, the Numeric Keypad is set to 'Transport', as some of the shortcuts assigned to Nucleus only work in this mode.

### Nucleus Setup

Go to the Nucleus Remote application and ensure the selected profile for DAW 1 is 'Pro Tools Standard'.

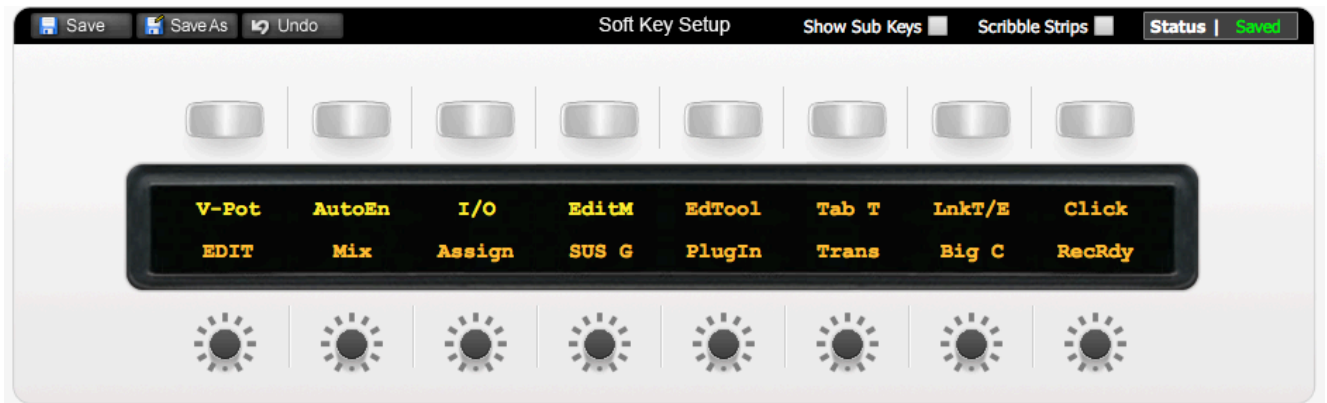
## Default



Above you can see the assignments for Nucleus' Default key set. You are in the Default Key Set when the User 1 or User 2 keys are not selected.

<b>Default</b>	Default faders/pan positions. Press and hold whilst pressing a channel's SEL key to set fader to unity. Press and hold whilst pushing a V-Pot in 'Pan' mode to centre the pan.
<b>Mute</b>	Changes push function of V-Pots between Muting sends or Pre/Post
<b>Send A</b>	V-Pot controls Send A levels
<b>Send B</b>	V-Pot controls Send B levels
<b>Send C</b>	V-Pot controls Send C levels
<b>Send D</b>	V-Pot controls Send D levels
<b>Send E</b>	V-Pot controls Send E levels
<b>Pan</b>	V-pots control Pan
<b>MIXER</b>	Shows/hides the Mixer
<b>PLUG</b>	Shows/hides the Plugin window of selected plugin.
<b>GROUPS</b>	Enables/Disables Group Suspend function
<b>Assign</b>	Enters/Exits the HUI Assign mode for Plug-ins and I/O assignments
<b>-----</b>	<i>Unassigned</i>
<b>-----</b>	<i>Unassigned</i>
<b>-----</b>	<i>Unassigned</i>
<b>KeybID</b>	Sets Keyboard ID on installation

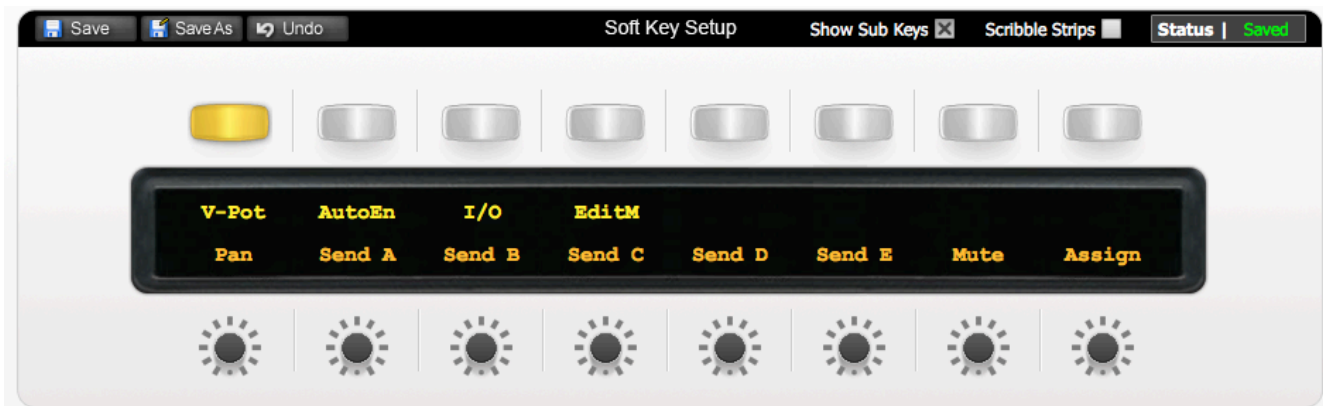
# User 1



Above you can see the assignments for User 1.

V-Pot	Opens/closes V-Pot Submenu
AutoEn	Opens/closes Automation Enable Submenu
I/O	Opens/closes Input and Output track assignments Submenu
EditM	Enters Editing Submenu
EdTool	Cycles through Pro Tools editing tools
Tab T	Turns Tab to Transients on/off
LnkT/E	Turns Link Timeline and Edit Selection on/off
Click	Turns click track on/off
Edit	Opens/closes the Edit window
Mix	Opens/closes the Mix window
Assign	Enters/Exits the HUI Assign mode for Plug-ins and I/O assignments
SUS G	Enables/Disables Group Suspend function
Plugin	Shows/hides the plugin window of selected plugin
Trans	Shows/hides the transport window
Big C	Shows/hides the big counter window
RecRdy	Record-ready for all tracks

## The V-Pot Submenu



Above you can see the assignments for the V-Pot Submenu.

Pan	V-Pots control Pan levels
Send A	V-Pots control Send A levels
Send B	V-Pots control Send B levels
Send C	V-Pots control Send C levels
Send D	V-Pots control Send D levels
Send E	V-Pots control Send E levels
Mute	Changes push function of V-Pots between Muting sends or Pre/Post
Assign	Enters/Exits the HUI Assign mode for plugins and I/O assignments

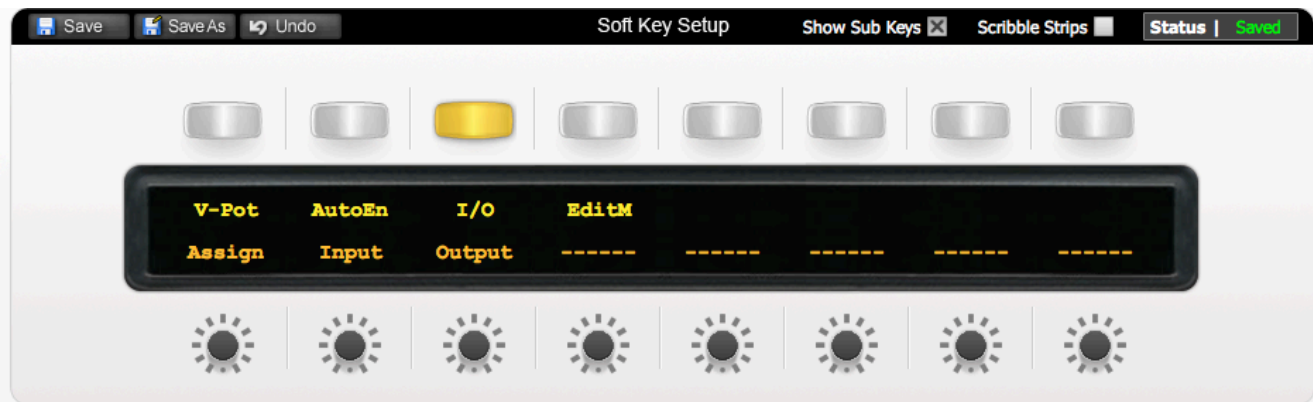
## The AutoEn Submenu



Above you can see the assignments for the AutoEn Submenu.

Fader	Enables/disables Fader automation
Mute	Enables/disables Mute automation
Pan	Enables/disables Pan automation
Send	Enables/disables Send automation
SMute	Enables/disables Send Mute automation
Plugin	Enables/disables Plugin automation
AutoS	Enables/disables all automation
AWind	Open/closes Automation window

## The I/O Submenu

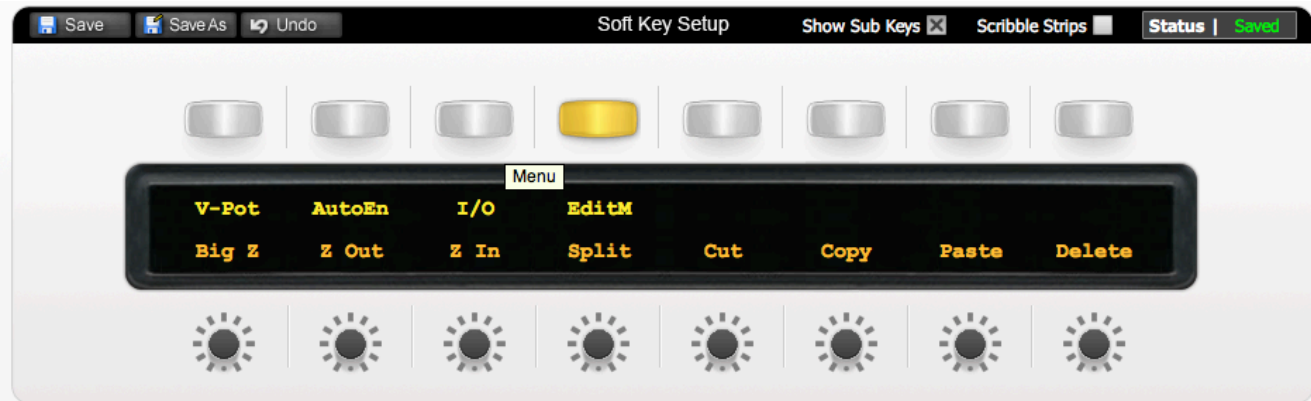


Above you can see the assignments for the I/O Submenu.

Assign	Enters/Exits the HUI Assign mode for Plugins and I/O assignments
Input	Allows assign mode to set channel inputs
Output	Allows assign mode to set channel outputs
-----	<i>Unassigned</i>
-----	<i>Unassigned</i>
-----	<i>Unassigned</i>
-----	<i>Unassigned</i>
-----	<i>Unassigned</i>
-----	<i>Unassigned</i>



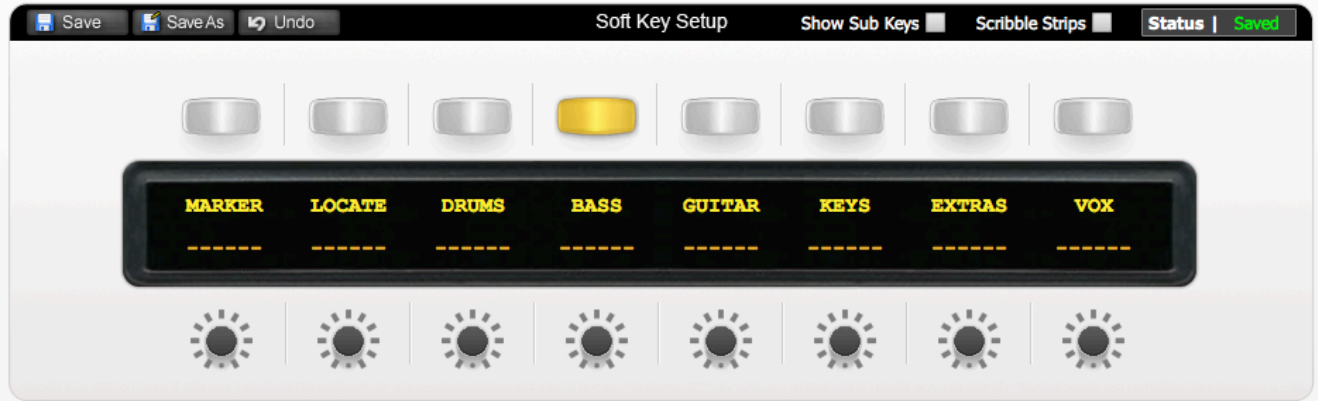
## The EditM Submenu



Above you can see the assignments for the EditM Submenu.

Big Z	Zooms in/out by set amount
Z Out	Vertical zoom out for all tracks
Z In	Vertical zoom in for all tracks
Split	Separates region at playhead
Cut	Cut highlighted region
Copy	Copy highlighted region
Paste	Paste highlighted region
Delete	Delete highlighted region

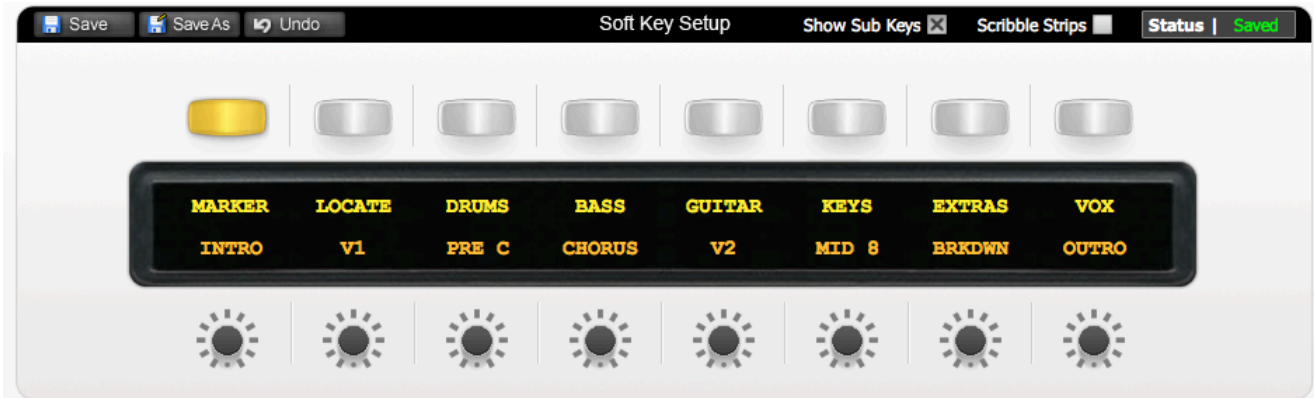
## User 2



Above you can see the assignments for User 2.

MARKER	Accesses the Marker Names Submenu
LOCATE	Accesses the Locate Names Submenu
DRUMS	Accesses the Drum Names Submenu
BASS	Accesses the Bass Names Submenu
GUITAR	Accesses the Guitar Names Submenu
KEYS	Accesses the Keys Names Submenu
EXTRAS	Accesses the Extra Names Submenu
VOX	Accesses the Vox Names Submenu
-----	<i>Unassigned</i>
-----	<i>Unassigned</i>
-----	<i>Unassigned</i>
-----	<i>Unassigned</i>
-----	<i>Unassigned</i>
-----	<i>Unassigned</i>
-----	<i>Unassigned</i>
-----	<i>Unassigned</i>

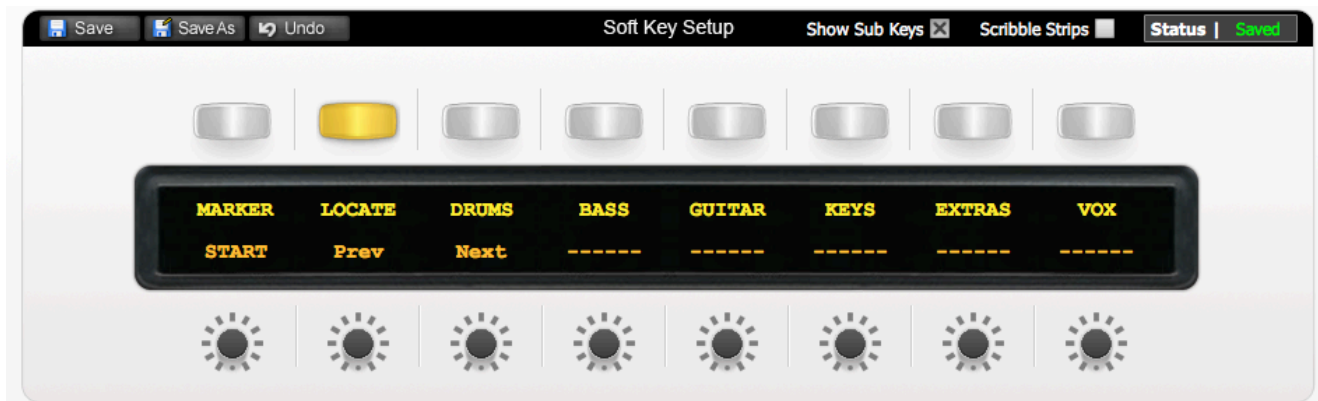
## Marker Submenu



Above you can see the assignments for the Marker Submenu.

INTRO	Enters a marker that names itself to 'INTRO'
V1	Enters a marker that names itself to 'V1'
PRE C	Enters a marker that names itself to 'PRE C'
CHORUS	Enters a marker that names itself to 'CHORUS'
V2	Enters a marker that names itself to 'V2'
MID 8	Enters a marker that names itself to 'MID 8'
BRKDWN	Enters a marker that names itself to 'BRKDWN'
OUTRO	Enters a marker that names itself to 'OUTRO'

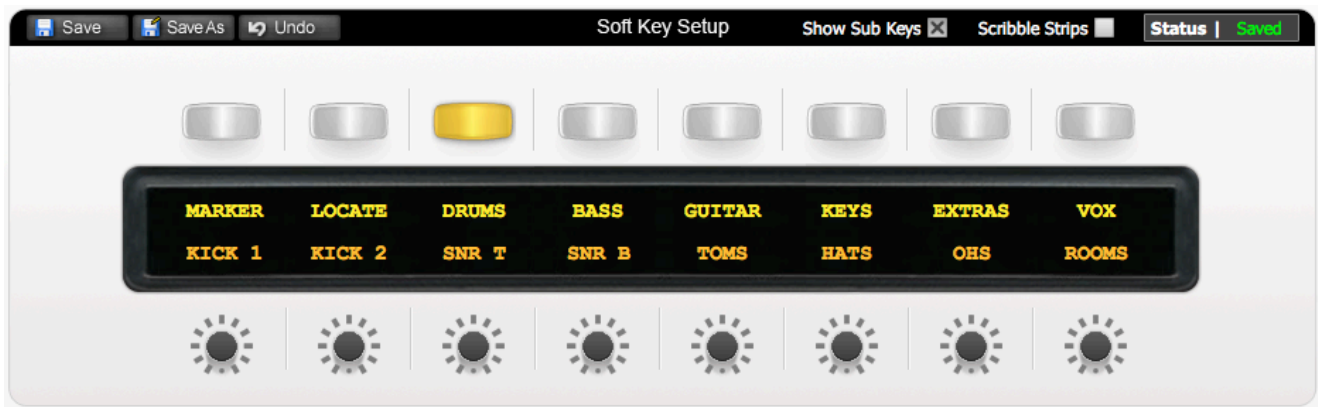
## Locate Submenu



Above you can see the assignments for the Locate Submenu.

START	Locates to session start
Prev	Locates to Previous marker
Next	Locates to Next marker
-----	<i>Unassigned</i>
-----	<i>Unassigned</i>
-----	<i>Unassigned</i>
-----	<i>Unassigned</i>
-----	<i>Unassigned</i>

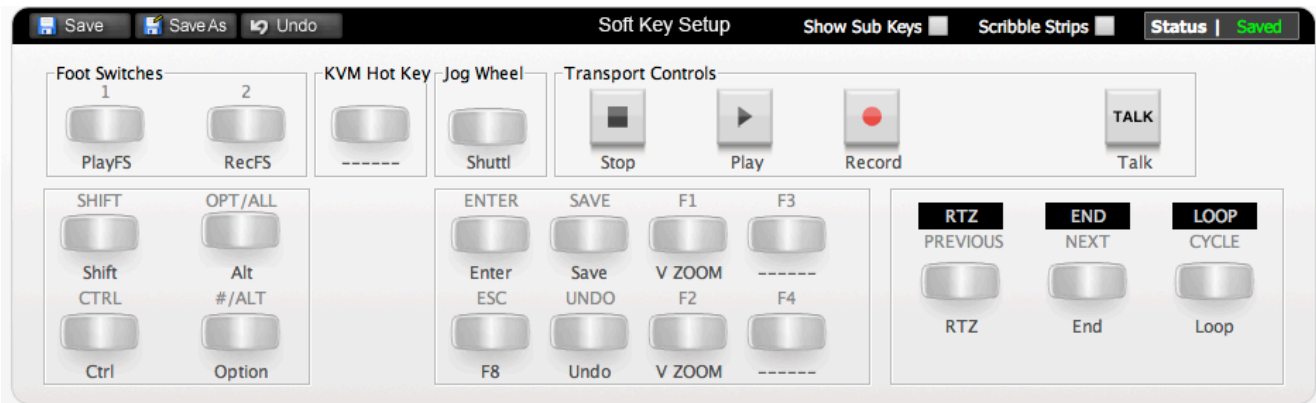
## Drums Submenu



Above you can see the assignments for the Locate Submenu.

KICK 1	Types in name 'KICK 1' followed by enter. Double tap 'SEL' Key to enter name dialogue before pressing this.
KICK 2	Types in name 'KICK 2' followed by enter. Double tap 'SEL' Key to enter name dialogue before pressing this.
SNR T	Types in name 'SNR T' followed by enter. Double tap 'SEL' Key to enter name dialogue before pressing this.
SNR B	Types in name 'SNR B' followed by enter. Double tap 'SEL' Key to enter name dialogue before pressing this.
TOMS	Types in name 'TOMS' followed by enter. Double tap 'SEL' Key to enter name dialogue before pressing this.
HATS	Types in name 'HATS' followed by enter. Double tap 'SEL' Key to enter name dialogue before pressing this.
OHS	Types in name 'OHS' followed by enter. Double tap 'SEL' Key to enter name dialogue before pressing this.
ROOMS	Types in name 'ROOMS' followed by enter. Double tap 'SEL' Key to enter name dialogue before pressing this.

# Transport/Utilities



Above you can see the assignments for the transport/utilities section.

PlayFS	Play command is assigned to footswitch jack
RecFS	Record command is assigned to footswitch jack
Shift	Shift command (HUI)
Ctrl	Ctrl command (HUI)
Alt	Alt command (HUI)
Option	Option command (HUI)
Shuttle	Turns wheel into a Shuttle function
Enter	Enters a marker
F8	Cycles Pro Tools edit tools
Save	Saves session
Undo	Undo
V Zoom (F1)	Vertical Zoom Out for all tracks
V Zoom (F2)	Vertical Zoom In for all tracks
RTZ	Locates to session start
End	Locates to region end
Loop	Turns loop playback on/off

# List of HUI Functions

The Pro Tools profile contains a mixture of HUI and USB keyboard shortcuts. To help you see how we have renamed the commands, see the table below.

**BLACK TEXT** = HUI command

**RED TEXT** = USB keyboard shortcut

DAW CMD / KEYBOARD SHORTCUT	SOFTKEY LABEL (RE-NAMED)
Default	Default
Mute	Mute
Send A	Send A
Send B	Send B
Send C	Send C
Send D	Send D
Send E	Send E
Pan	Pan
<b>Apple =</b>	MIXER
Open/close plugin editor	PLUG
<b>Shift Apple G</b>	GROUPS
Assign	Assign
Edit to foreground	Edit
Mix to foreground	Mix
<b>Shift Apple G</b>	SUS G
Open/close plugin editor	Plugin
Open/close transport	Trans
<b>Apple "Numeric Keypad 3"</b>	Big C
Rec/Rdy All	RecRdy
Edit Tool	EdTool
<b>Alt Apple Tab</b>	Tab T
<b>Shift /</b>	LnkT/E
<b>"Numeric Keypad 7"</b>	Click
Auto Enable Fader	Fader
Auto Enable Mute	Mute
Auto Enable Pan	Pan
Auto Enable Send	Send
Auto Enable Send Mute	SMute
Auto Enable Plugin	Plugin
Auto Suspend	AutoS
<b>Apple "Numeric Keypad 4"</b>	AWind
Input	Input
Output	Output

e	Big Z
Ctrl Alt "Down Arrow"	Z Out
Ctrl Alt "Up Arrow"	Z In
Apple e	Split
Apple x	Cut
Apple c	Copy
Apple v	Paste
Backspace	Delete
"Numeric Enter" 'INTRO' "Numeric Enter"	INTRO
"Numeric Enter" 'V1' "Numeric Enter"	V1
"Numeric Enter" 'PRE C' "Numeric Enter"	PRE C
"Numeric Enter" 'CHORUS' "Numeric Enter"	CHORUS
"Numeric Enter" 'V2' "Numeric Enter"	V2
"Numeric Enter" 'MID 8' "Numeric Enter"	MID 8
"Numeric Enter" 'BRKDOWN' "Numeric Enter"	BRKDOWN
"Numeric Enter" 'OUTRO' "Numeric Enter"	OUTRO
RTZ	START
Prev Marker	Prev
Next Marker	Next
Play Foot Switch	PlayFS
Record Foot Switch	RecFS
Shift/All	Shift
Control	Ctrl
CMD/Alt/Fine	Alt
Option/All	Option
Shuttle	Shuttle
KPad Enter	Enter
FKey 8/Esc	F8
Save	Save
Undo	Undo
Ctrl Alt "Down Arrow"	V ZOOM
Ctrl Alt "Up Arrow"	V ZOOM
RTZ	RTZ
End	End
Loop	Loop
Stop	Stop
Play	Play
Record	Record