

Logic Standard Nucleus² Profile

Setup and Quick Start Guide



Introduction

The first part of this tutorial details how to setup Logic with your SSL Nucleus². The second part details the commands assigned to the profile.

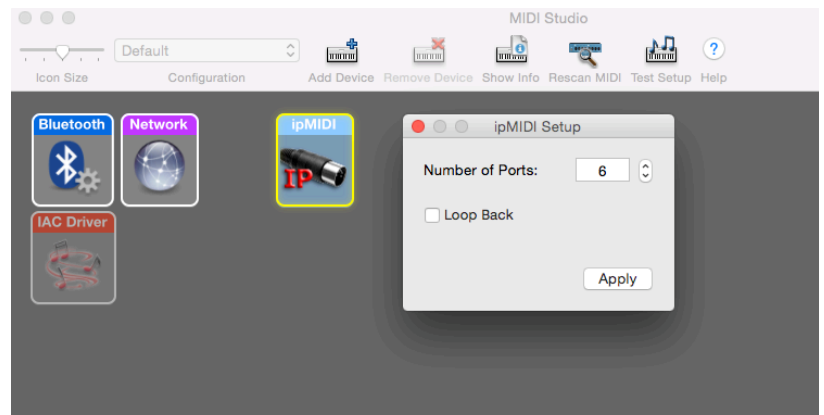
This tutorial assumes you have already installed all the necessary Nucleus² related software on your computer and that there is both a working network and USB connection from your DAW computer to the Nucleus. If you have yet to configure this part of your system, please refer to the Nucleus² Owner's Manual before continuing.

Go to the SSL website › Nucleus² Product page › Downloads to make sure your software is all up-to-date.

ipMIDI Setup

Apple Mac OSX

- 1) Close all applications using MIDI
- 2) Open AudioMidi Setup (Applications > Utilities > Audio MIDI Setup)
- 3) Open the MIDI Window (Audio MIDI Setup > Window > Show MIDI Studio)
- 4) Double click the ipMIDI icon
- 5) Set number of ports to 6 and ensure that 'Loopback' is not ticked and then press 'Apply'



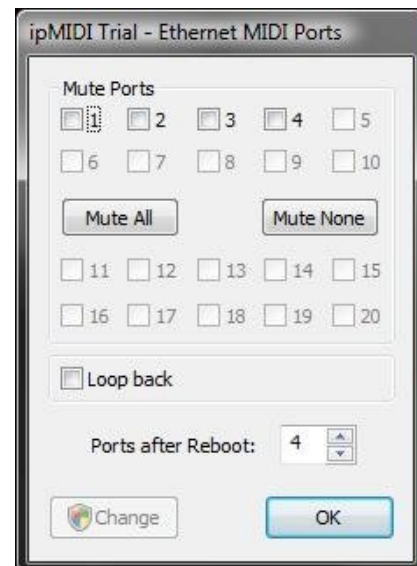
OR

Microsoft Windows OS

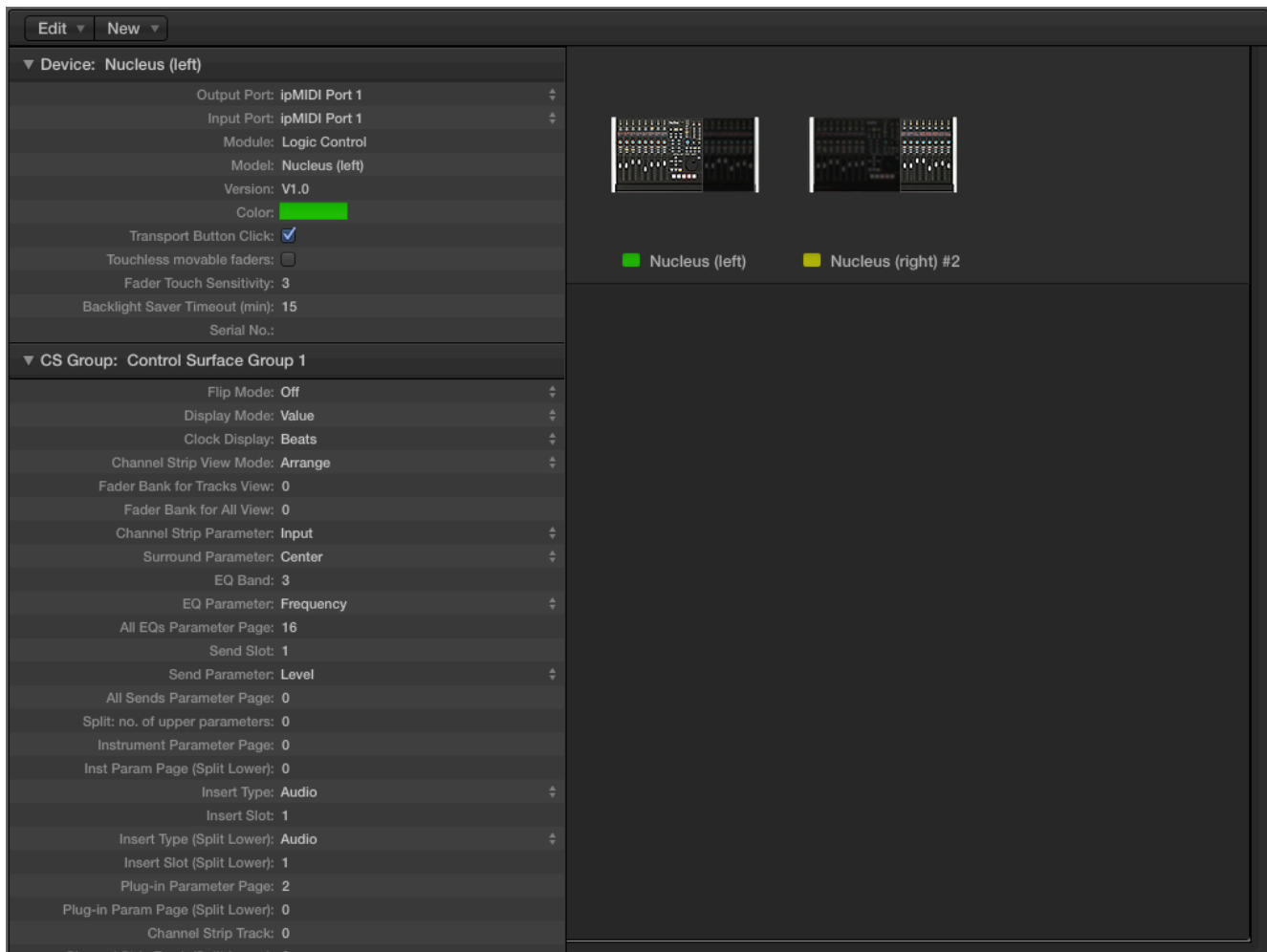
This setup information covers Windows 7, 8, and 10

- 1) Launch the ipMIDI Monitor application
- 2) Ensure Ports 1 to 6 are not muted
- 3) Un-tick 'Loop Back'
- 4) Set 'Ports after Reboot' to 6 and ensure that 'Loopback' is not ticked and then press 'OK'

Note: If you are opening up Ports for the first time, after Rebooting your computer, these will be 'muted'. Be sure to open ipMIDI back up and untick the muted Ports



Setting up Logic



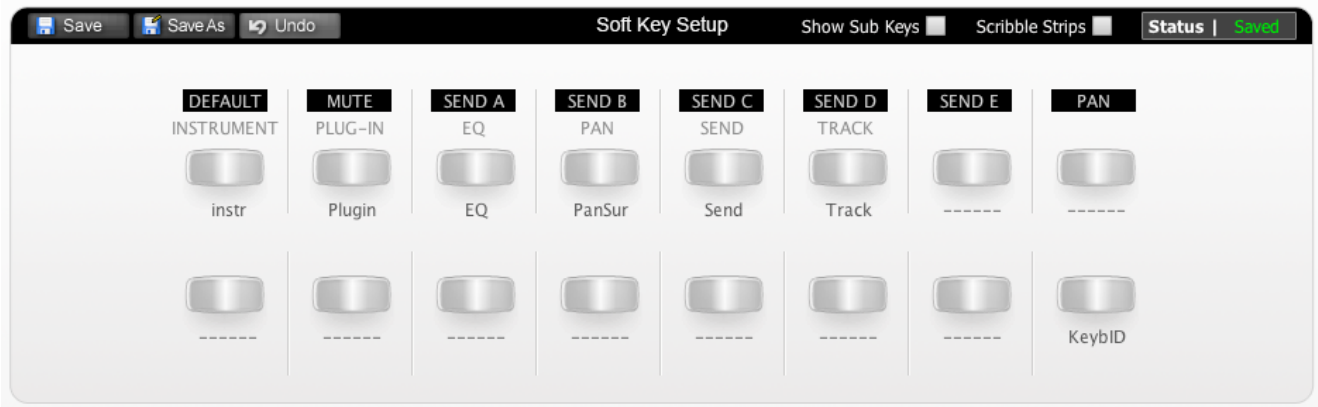
Control surfaces are setup in the “Logic Pro X”>”Control Surfaces”>”Setup” (or “Preferences”>”Control Surface Setup” if using Logic 9 or below) menu. In this example we will setup Logic for operation on DAW layer 1 of Nucleus².

- 1) Choose ‘New’ and then ‘Install...’
- 2) Choose Nucleus (left) and then ‘Add’
- 3) Set both ‘Output Port’ and ‘Input Port’ to ‘Port 1’
- 4) Again, choose ‘New’ and ‘Install...’
- 5) Choose ‘Nucleus (right)’ and then ‘Add’
- 6) Set both the ‘Output Port’ and ‘Input Port’ to ‘Port 2’

Nucleus² Setup

Go to the Nucleus² Remote application and ensure the selected profile for DAW 1 is ‘Logic Standard’.

Default

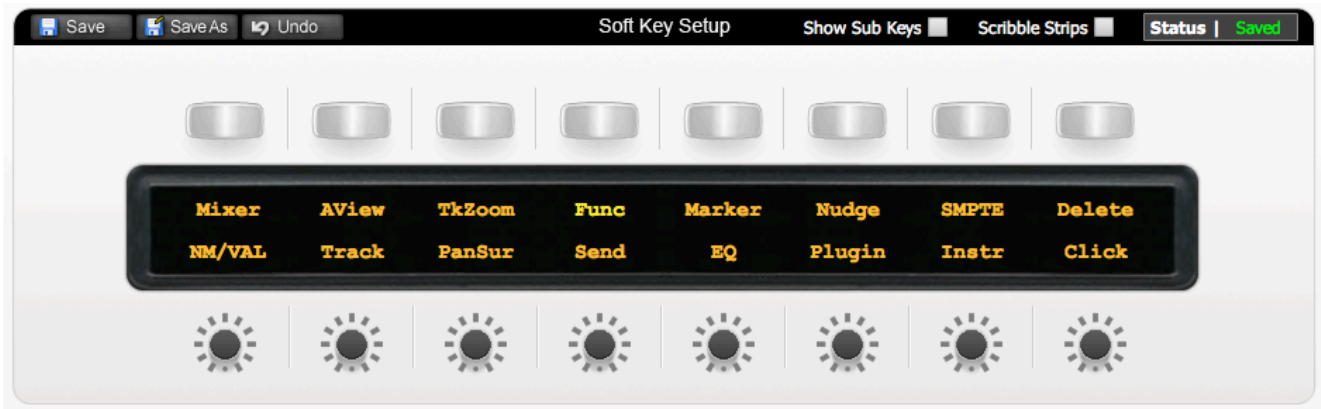


Above you can see the assignments for Nucleus² Default key set. You are in Default Key Set when the User 1 or User 2 keys are not selected.

INSTR	V-pots control Virtual instruments
PLUGIN	V-pots control Plug-ins
EQ	Opens standard Logic EQ strip on selected channel (has push and hold function)
PANSUR	V-pots control pan parameters (has push and hold function)
SEND	V-pots control send parameters (has push and hold function)
TRACK	Globally changes V-Pots through various 'Track' options (has push and hold function)
-----	<i>Unassigned</i>
-----	<i>Unassigned</i>
-----	<i>Unassigned</i>
-----	<i>Unassigned</i>
-----	<i>Unassigned</i>
-----	<i>Unassigned</i>
-----	<i>Unassigned</i>
-----	<i>Unassigned</i>
-----	<i>Unassigned</i>
KeybID	Sets Keyboard ID on setup

Tip: The Logic Manual section on Mackie Controllers (MCU) contains a lot of useful information that will help you get the most from using Nucleus² with Logic.

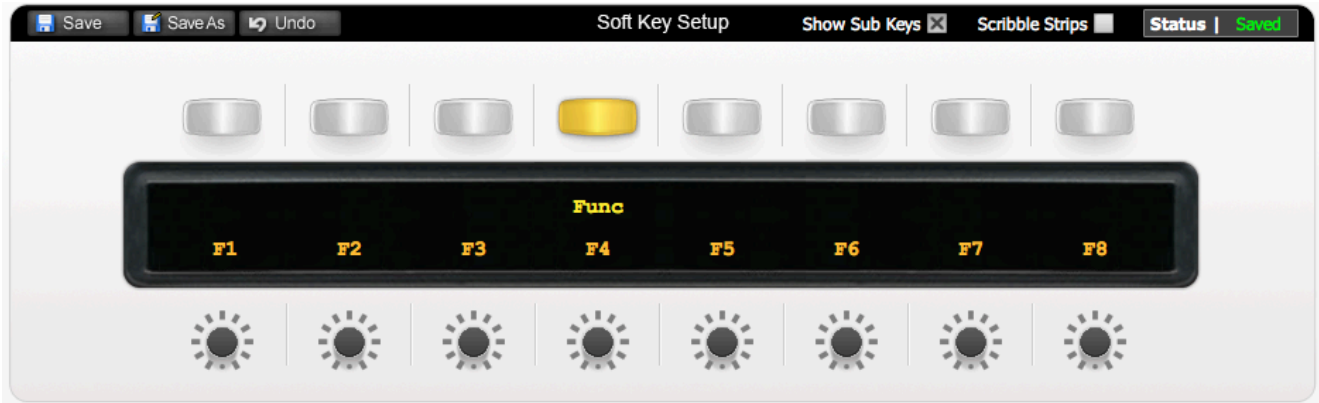
User 1



The image above show the assignments for User 1.

Mixer	Opens/Closes the Mixer
AView	Shows/Hides automation lane data
TkZoom	Zooms track
Func	Accesses the Func Submenu
Marker	Creates/Deletes Markers (push and hold function)
Nudge	Nudges selected region
SMPTE	Changes nudge value between SMPTE or Bar/Beats
Delete	Deletes Selected Region
NM/VAL	Switches V-Pot display between labels/values
Track	Globally changes V-Pots through various 'Track' options (has push and hold function)
PanSur	V-Pots control pan parameters (has push and hold function)
Send	V-Pots control send parameters (has push and hold function)
EQ	Opens standard Logic EQ strip on selected channel (has push and hold function)
Plugin	V-Pots control Plug-ins
Instr	V-Pots control Virtual Instruments
Click	Turns the metronome on/off

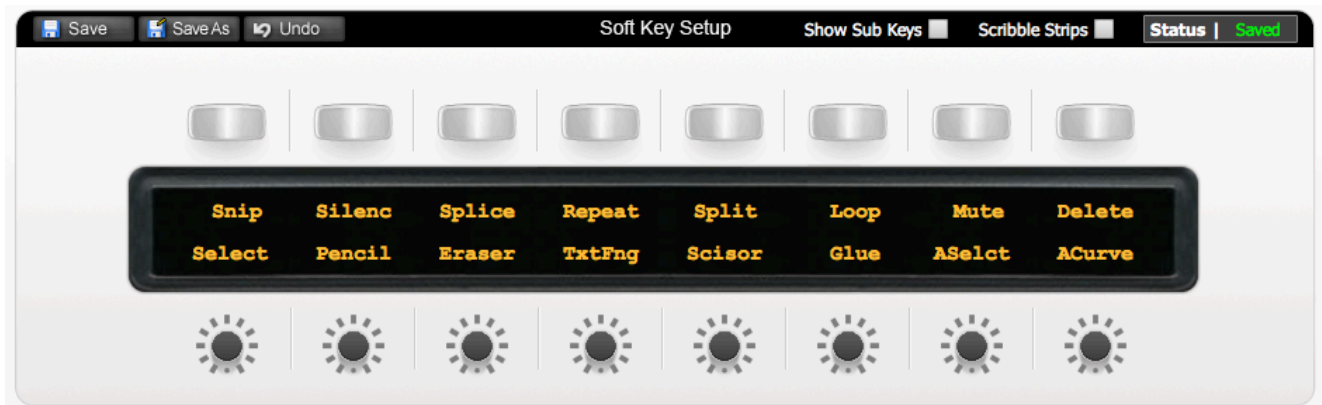
Func Submenu



The image above show the assignments for Func Submenu.

F1	Opens Screenset 1
F2	Opens Screenset 2
F3	Opens Screenset 3
F4	Opens Screenset 4
F5	Opens Screenset 5
F6	Opens Screenset 6
F7	Opens Screenset 7
F8	Opens Screenset 8

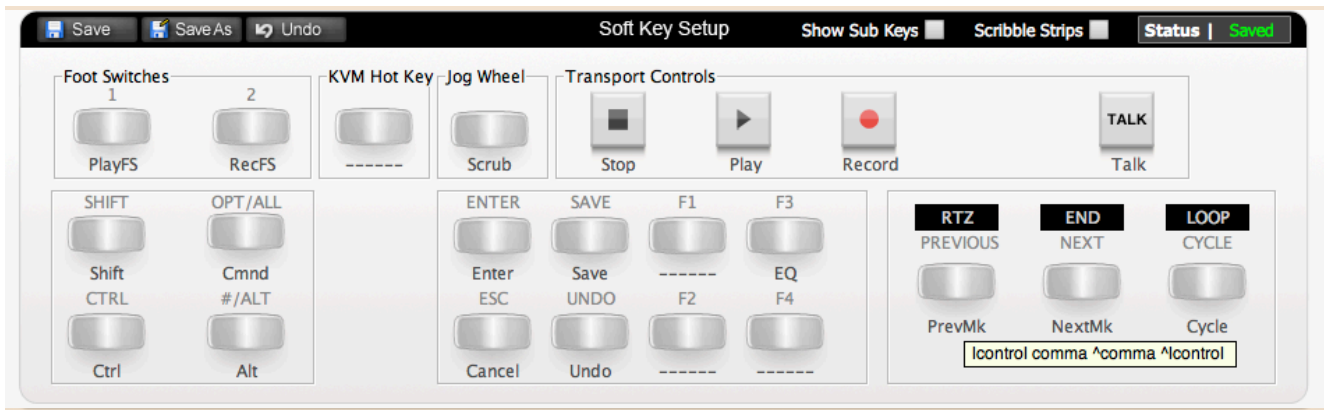
User 2



The image above show the assignments for User 2.

Snip	Cuts section between locators (Arrange Page)
Silenc	Inserts silence between locators (Arrange Page)
Splice	Inserts snipped section at playhead (Arrange Page)
Repeat	Repeats section between locators (Arrange Page)
Split	Splits regions/events by playhead position (Arrange Page)
Loop Region	Turns loop on/off for selected region (Arrange Page)
Mute	Mute selected region (Arrange + MIDI Page)
Delete	Deletes selected region (Arrange + MIDI Page)
Select	Select tool (Arrange + MIDI Page)
Pencil	Pencil tool (Arrange + MIDI Page)
Eraser	Eraser tool (Arrange + MIDI Page)
TxtFng	Text/Finger tool (Arrange + MIDI Page)
Scissor	Scissors tool (Arrange + MIDI Page)
Glue	Glue tool
ASelct	Automation Select (Arrange + MIDI Page)
ACurve	Automation Curve (Arrange + MIDI Page)

Transport/Utility



The image above show the assignments for the Transport/Utility section of Nucleus².

PlayFS	Play command is assigned to footswitch port
RecFS	Record command is assigned to footswitch port
Shift	Keyboard Shift (follow key state)
Ctrl	Keyboard Ctrl key (follow key state)
Cmnd	Keyboard Cmnd key (follow key state)
Alt	Keyboard Alt Key (follow key state)
Scrub	Puts jogwheel into scrub mode
Enter	Keyboard Enter Key (follow key state)
Cancel	Cancel
Save	Saves Project
Undo	Undo
EQ	Opens standard Logic EQ strip on selected channel (has push and hold function)
PrevMk	Locates to previous marker
NextMk	Locates to next marker
Cycle	Turns cycle on/off

List of MCU Functions

The Logic profile contains a mixture of MCU commands and USB Keyboard shortcuts. To help you see how we have renamed the commands, see the table below.

BLACK TEXT = MCU Command

RED TEXT = USB Keyboard shortcut

DAW CMD/ KEYBOARD SHORTCUT	SOFTKEY LABEL (RE-NAMED)
Instr	Instr
Plugin	Plugin
EQ	EQ
PanSur	PanSur
Track	Track
KeybID	KeybID
x	Mixer
a	AView
z	TkZoom
Menu	Func
Marker	Marker
Nudge	Nudge
SMPTE/Beats	SMPTE
Backspace	Delete
Name/Value	NM/VAL
Track	Track
PanSur	PanSur
Send	Send
EQ	EQ
Plugin	Plugin
Instr	Instr
Click	Click
Ctrl Cmnd X	Snip
Ctrl Cmnd Z	Silenc
Ctrl Cmnd Y	Splice
Ctrl Cmnd R	Repeat
/	Split

L	Loop
M	Mute
Backspace	Delete
Esc>1	Select
Esc>2	Pencil
Esc>3	Eraser
Esc>4	TxtFng
Esc>5	Scisor
Esc>6	Glue
Esc>Q	ASelct
Esc>W	ACurve
F1	F1
F2	F2
F3	F3
F4	F4
F5	F5
F6	F6
F7	F7
F8	F8
Play Foot Switch	PlayFS
Record Foot Switch	RecFS
Shift (follow key state)	Shift
Cmnd (follow key state)	Cmnd
Ctrl (follow key state)	Ctrl
Alt (follow key state)	Alt
Ctrl .	NextMk
Ctrl ,	PrevMk
Cycle	Cycle
Stop	Stop
Play	Play
Record	Record
Enter	Enter
Cancel	Cancel
Save	Save
Undo	Undo
Scrub	Scrub

