

Live Standard Nucleus² Profile

Setup and Quick Start Guide



Introduction

The first part of this tutorial details how to setup Ableton Live with your SSL Nucleus². The second part details the commands assigned to the profile.

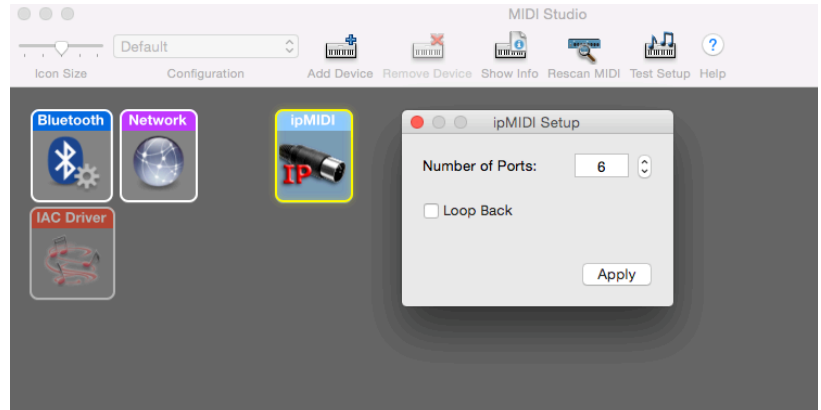
This tutorial assumes you have already installed all the necessary Nucleus² related software on your computer and that there is both a working network and USB connection from your DAW computer to the Nucleus. If you have yet to configure this part of your system, please refer to the Nucleus² Owner's Manual before continuing.

Go to the SSL website › Nucleus² Product page › Downloads to make sure your software is all up-to-date.

ipMIDI Setup

Apple MacOSX

- 1) Close all applications using MIDI
- 2) Open AudioMidi Setup (Applications > Utilities > Audio MIDI Setup)
- 3) Open the MIDI Window (Audio MIDI Setup > Window > Show MIDI Studio)
- 4) Double click the ipMIDI icon
- 5) Set number of ports to 6 and ensure that 'Loopback' is not ticked and then press 'Apply'



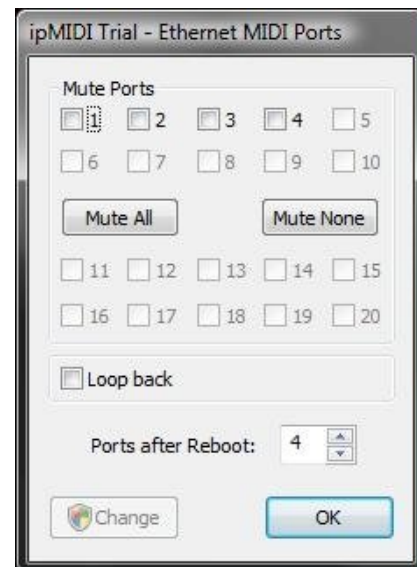
OR

Microsoft Windows OS

This setup information covers Windows 7, 8, and 10

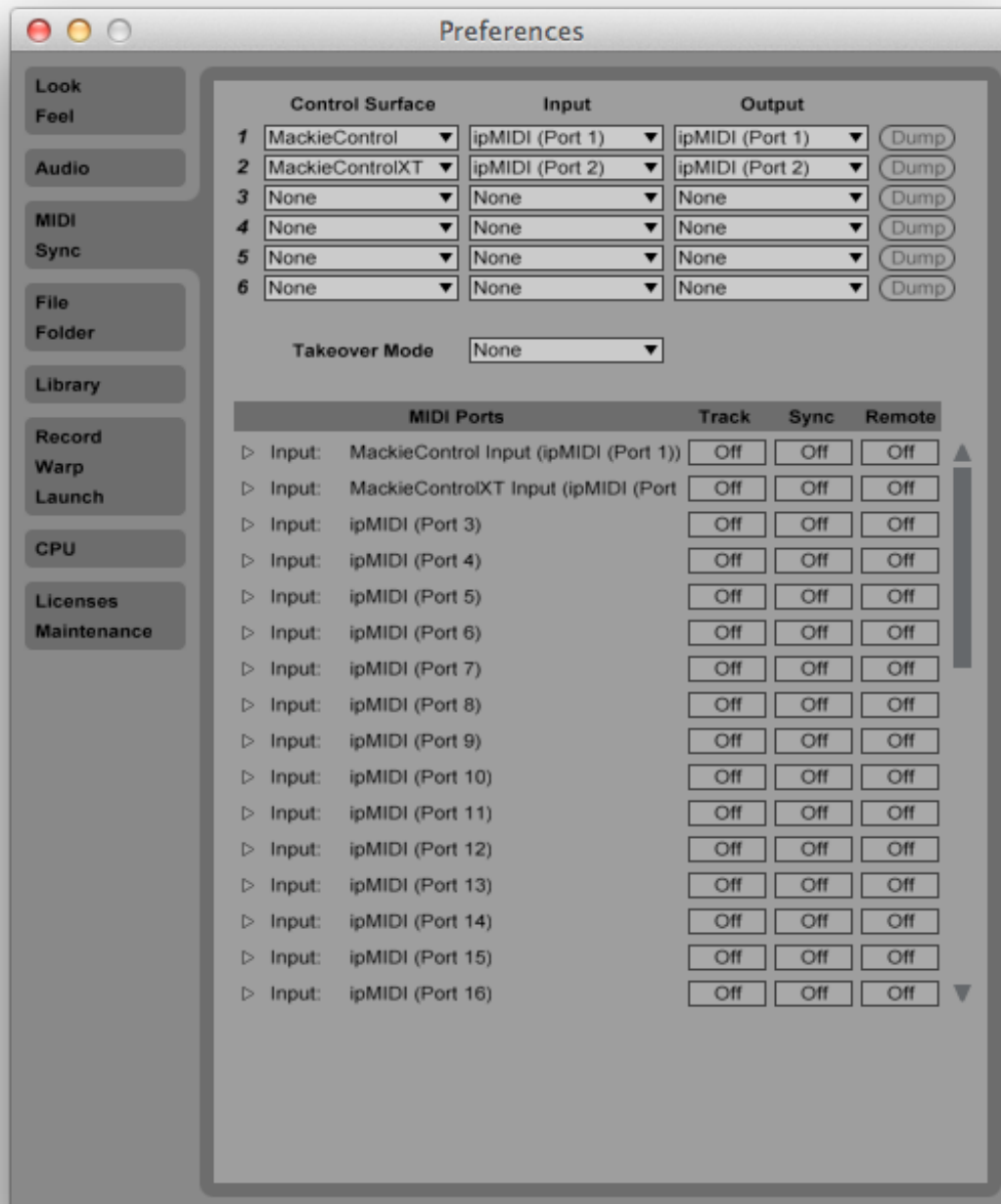
- 1) Launch the ipMIDI Monitor application
- 2) Ensure Ports 1 to 6 are not muted
- 3) Un-tick 'Loop Back'
- 4) Set 'Ports after Reboot' to 6 and ensure that 'Loopback' is not ticked and then press 'OK'

Note: If you are opening up Ports for the first time, after Rebooting your computer, these will be 'muted'. Be sure to open ipMIDI back up and untick the muted Ports



Setting up Ableton Live

In this example we will setup Live for operation on DAW layer 1 of Nucleus². In the Live Preferences menu, the MIDI SYNC tab should be set as below:



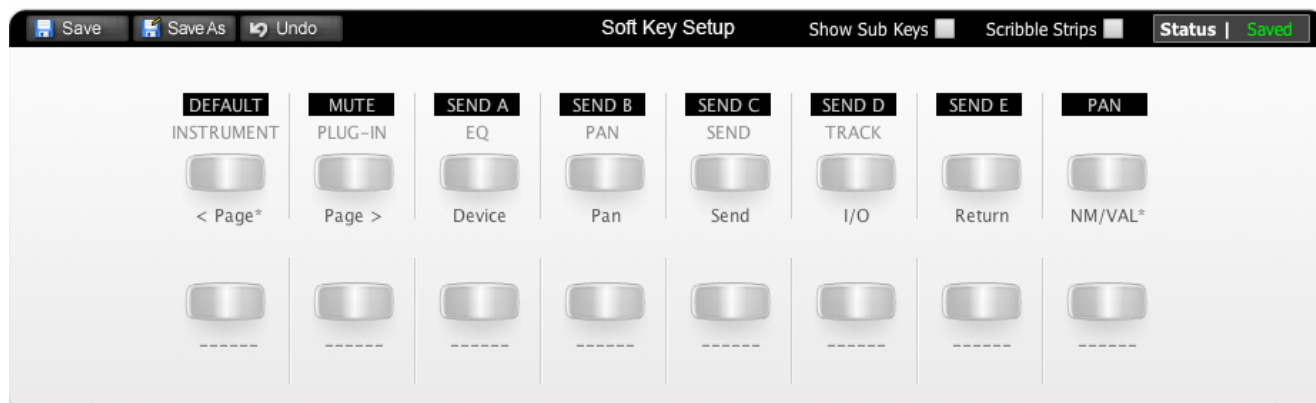
Note:

Please be aware that control surface support is disabled in Live when Live is in rewire slave mode.

Nucleus² Setup

Go to the Nucleus2 Remote application and ensure the selected profile for DAW 1 is 'Live Standard'.

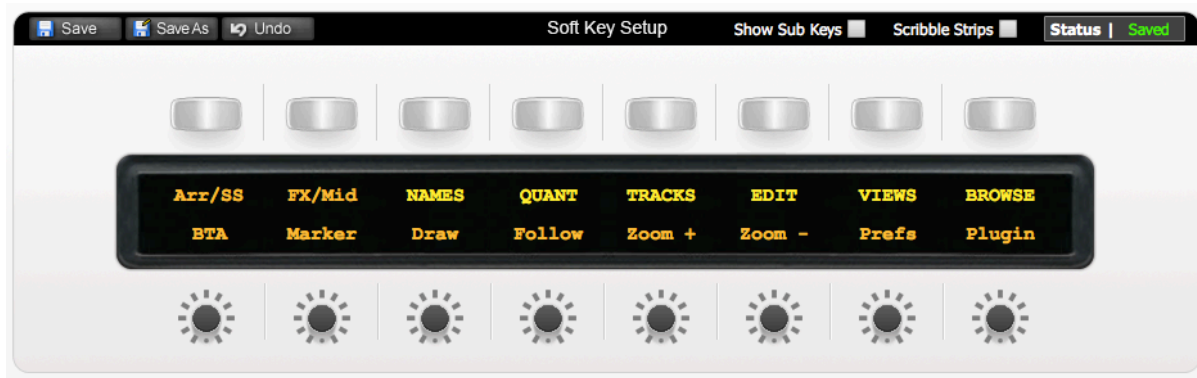
Default Key Set



Above you can see the assignments for Nucleus² Default key set. You are in the Default Key Set when the User 1 or User 2 keys are not selected.

<Page	Pages left when there are more than 16 parameters mapped across the V-pots
Page>	Pages right when there are more than 16 parameters mapped across the V-pots
Device	Brings up a list of the devices and plugins inserted on the selected channel. These can then be selected with the V-Pot buttons and the parameters of that device/plugin are then mapped across the V-Pots for editing.
Pan	Assigns V-Pot to pan controls
Send	Assigns V-Pots to send levels for each track
I/O	Assigns the V-Pots to control channel input and output assignment. Re-pressing cycles through input type, input channel, output type and output channel
Return	Assigns faders, Sel, Solo & Cut buttons and V-Pots to Return channels.

User 1



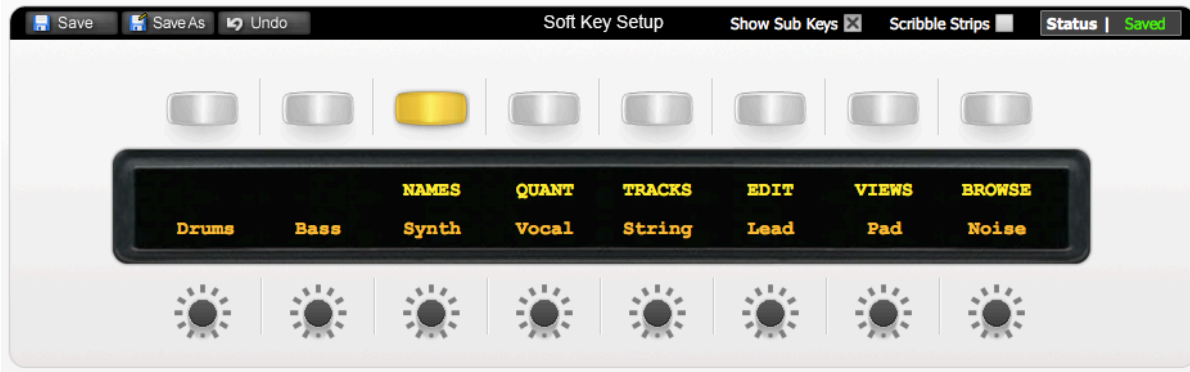
Above are the default assignments for the User 1 Key sets. The top row of the main soft keys page contains 2 switches and 6 menu selections to access additional commands.

Arr/SS	Toggles between Arrangement View and Session View
FX/Mid	Toggles between track (devices and plugins) and clip view (midi piano-roll and sample view)
NAMES	Opens the Names sub menu
QUANT	Opens the Quantisation sub menu
TRACKS	Opens the Tracks sub menu
EDIT	Opens the Edit sub menu
VIEWS	Opens the Views sub menu
BROWSE	Opens the Browser sub menu

The lower row of the main soft key page contains 8 Live dedicated functions:

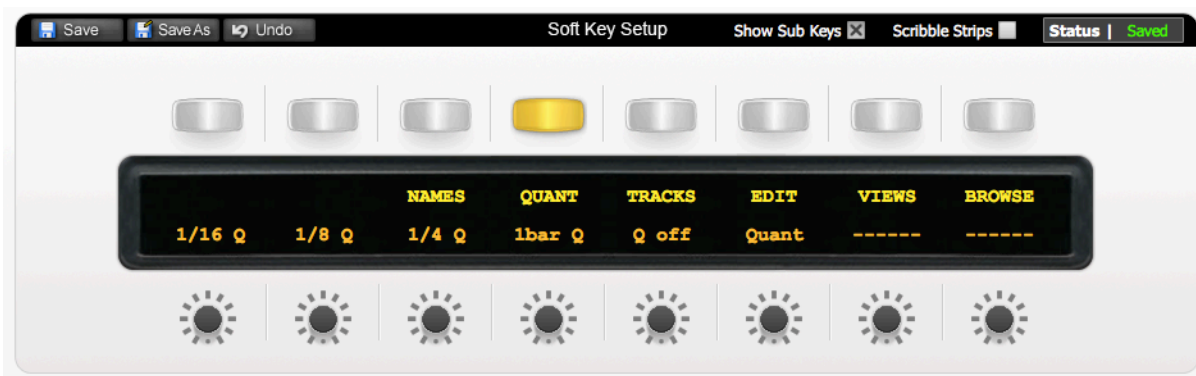
BTA	(Back To Arrangement) stops clips in Session View from playing differently to how they were recorded into the Arrangement and returns to playing the Arrangement. The LED will illuminate if there is an Arrangement state available to return to.
Marker	Creates a new Marker at the current play position.
Draw	Enables/disables Draw Mode.
Follow	Toggles the waveform scrolling Follow mode.
Zoom +	Zoom in to Arrangement page.
Zoom -	Zoom out of Arrangement page.
Prefs	Opens the Preferences page for Live.
Plugin	Opens and closes Plugin window.

The NAMES menu



A simple layer that allows you to quickly name Tracks. These can be edited from the remote app to suit your own compositions.

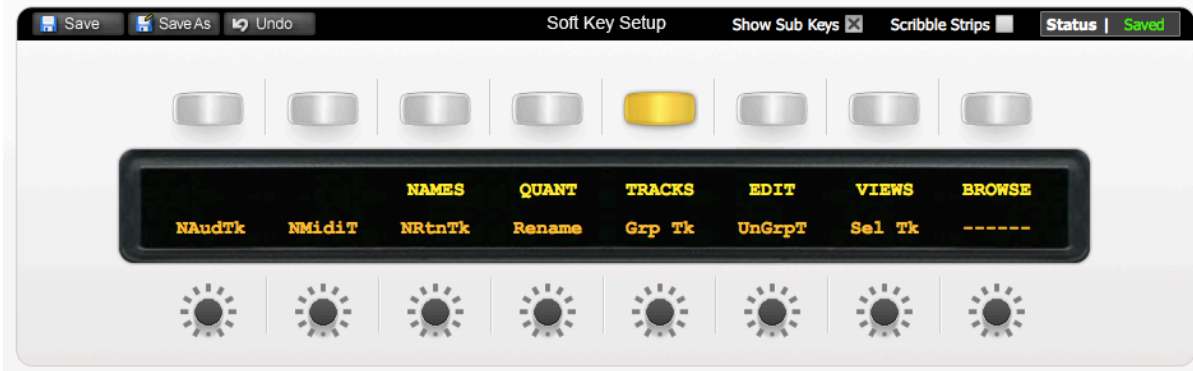
The QUANT menu



Allows you to choose your Quantise value:

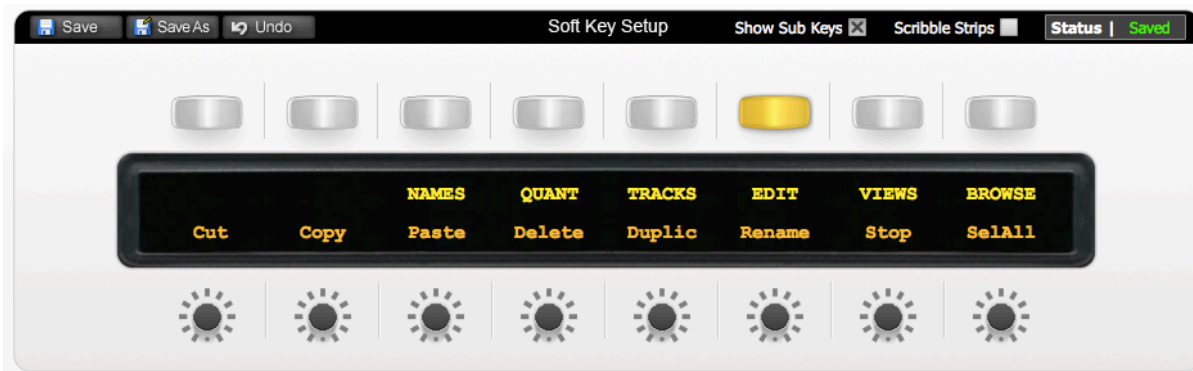
1/16 Q	Sets global Quantisation value to 1/16 th note
1/8 Q	Sets global Quantisation value to 1/8 th note
1/4 Q	Sets global Quantisation value to 1/4 th note
1bar Q	Sets global Quantisation value to 1 bar
Q off	Sets global Quantisation value to off
Quant	Quantise

The TRACKS menu



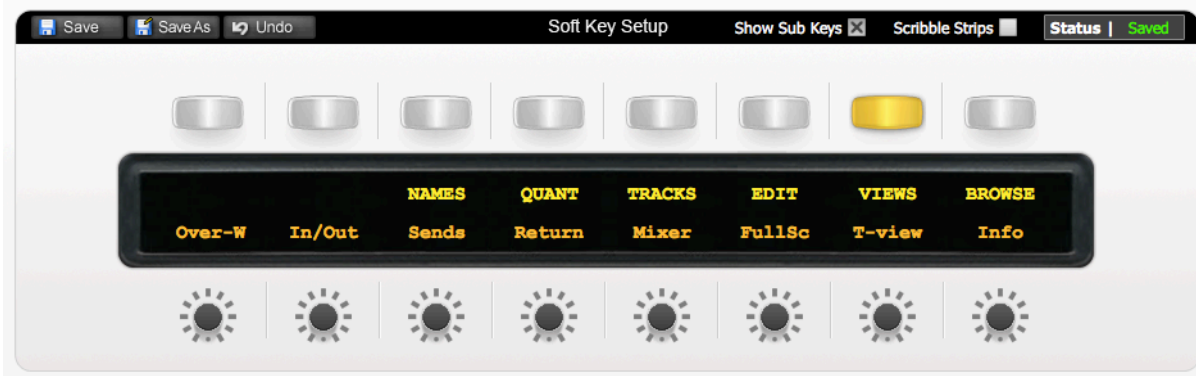
NAudTk	Creates New Audio Track.
NMidiT	Creates New MIDI Track.
NTrnTk	Creates New Return Track.
Rename	Rename Track.
Grp Tk	Selects Group Tracks.
UnGrpT	Selects UnGroup Tracks
Sel Tk	Selects Track.

The EDIT menu



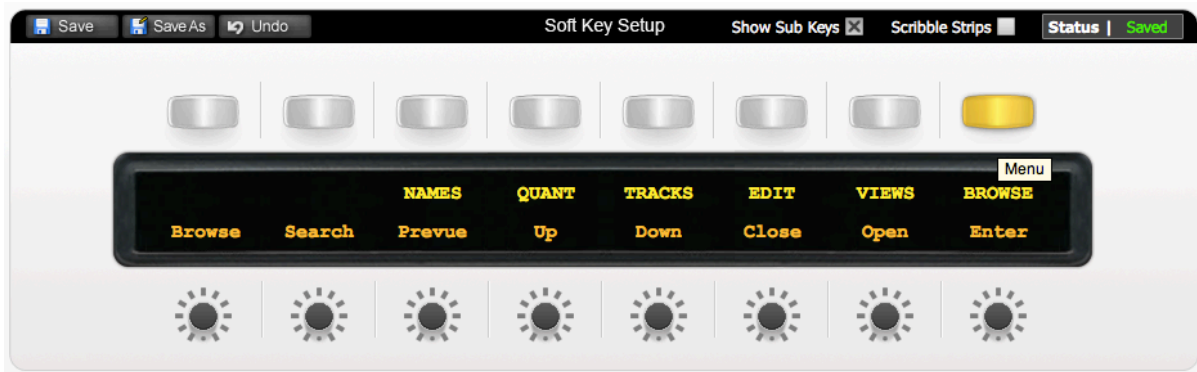
Cut	Cut clip
Copy	Copy clip
Paste	Paste clip
Delete	Delete clip
Duplic	Duplicate clip
Rename	Rename clip
Stop	Add/remove Stop button
SelAll	Select All clips

The VIEWS menu



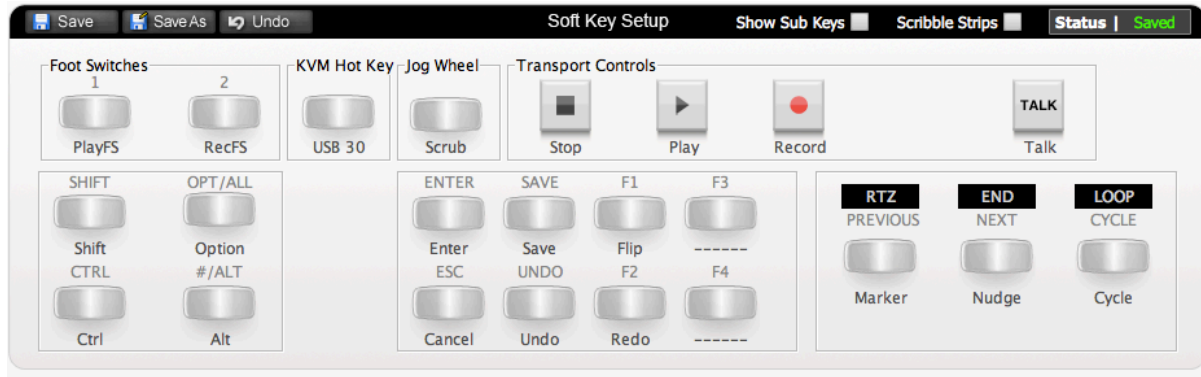
Over-W	Show/hides Clip Overview at the top of the Screen.
In/Out	Show/hides Input/Output Controls
Sends	Show/hides track Send Level controls (Session View only)
Return	Show/hides Return tracks
Mixer	Show/hides the Mixer
FullSc	Toggles Full Screen mode
T-view	Show/hides the Clip/Track View
Info	Show/hides the Info view

The BROWSE menu



Browse	Hide/show Browser view
Search	Opens Browser Search filed
Prevue	Preview selected sample/clip/instrument preset
Up	Move Up the menu
Down	Move Down the menu
Close	Close a highlighted folder
Open	Open a highlighted folder
Enter	Load the selected item

Transport



Above is the default layout for the Nucleus² transport section with Live.

Below is a list of MCU commands in Live.

Softkey Label	DAW CMND
KeybID	Keyboard ID
I/O	I/O
Pan	PAN
< Page	PAGE LEFT
Send	SEND
Device	DEVICE
Page >	PAGE RIGHT
Flip	FLIP
Return	RETURN
Meter	METER
SMPTE	SMPTE/BEATS
F1	F1
F2	F2
F3	F3
F4	F4
F5	F5
F6	F6
F7	F7
F8	F8
F9	F9
F10	F10
F11	F11
F12	F12
F13	F13
F14	F14
F15	F15
F16	F16
Shift	SHIFT
Option	OPTION
CTRL	CONTROL
Alt	ALT
Arr/ss	ARR/SS

Tk/Clp	TRACK CLIP
Browse	BROWSER
Detail	DETAIL
Undo	UNDO
BTA	BTA
Draw	DRAW
Redo	REDO
Locatr	LOCATR
Follow	FOLLOW
Marker	MARKER
Nudge	NUDGE
Cycle	CYCLE
PnchIn	PUNCH IN
PnchOt	PUNCH OUT
Home	HOME
End	END
	FORWARD
	REWIND
Stop	STOP
Play	PLAY
Record	RECORD
VSEL1	VSEL1
VSEL2	VSEL2
VSEL3	VSEL3
VSEL4	VSEL4
VSEL5	VSEL5
VSEL6	VSEL6
VSEL7	VSEL7
VSEL8	VSEL8
PlayFS	PLAY FOOT SWITCH
RecFS	RECORD FOOT SWITCH
Scrub	SCRUB